

# **BRUNNER** USECASE

dedication + innovation

---

## **SIMULATOR UPDATE WITH BRUNNER CLS LINEAR MOTION AT TNIAU FLYING TRAINING WING**



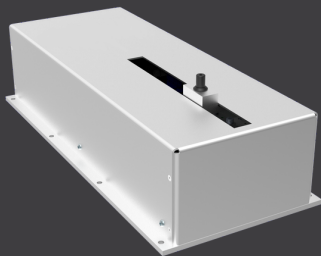
## **INDONESIA**





---

## PROJECT BACKGROUND



In its quest to utilize state-of-the-art training technology, the Indonesian Air Force Flight School (TNIAU) has taken a significant step forward by integrating the BRUNNER CLS-P linear-motion device into its training infrastructure.

This advanced control loading (CLS) drop in device is integrated into both the Grob G120 TP and KAI KT-1B simulators for pitch, roll and yaw axis, bringing the quality of realism and immersion in flight training to the next level.



## SCENARIO

Flight students and instructors at the TNIAU's sole Flying Training Wing at Adisutjipto AFB Yogyakarta engage with the Grob G120TP and KAI KT-1B Simulators to enhance their training and proficiency levels. These simulators play a pivotal role in the comprehensive curriculum designed for both cadet airforce pilots and experienced instructors.

---



---

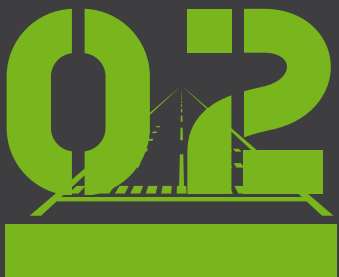
## TRAINING IMPACT

### Enhanced Situational Awareness:



The integration of the BRUNNER CLS-P linear motion device significantly enhances situational awareness for flight students. The realistic motion cues provide a better sense of the aircraft's behavior, allowing students to deeper understand and respond to dynamic flight scenarios.

### Improved Muscle Memory Development:



The BRUNNER CLS device, which provides realistic force feedback, makes the development of muscle memory to handle specific flight conditions easier. This muscle memory is invaluable when transitioning from simulator training to live aircraft, as students are better prepared for the physical demands of the actual flight.

### Immersive Simulation Experience:

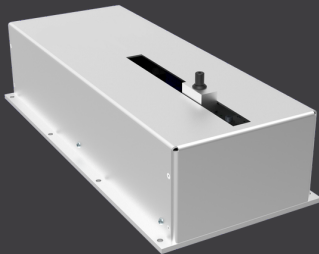


The BRUNNER Control loading devices transform the simulation experience into a highly immersive and realistic training environment. This level of realism not only enhances the effectiveness of training but also makes the learning experience more engaging and efficient for students.



---

## PROJECT SUMMARY



The integration of the BRUNNER CLS-P linear-motion into the Grob G120TP and KAI KT-1B Simulators improves the flight training massively at the TNIAU Training Center.

The training facility ensures that its students receive a training experience that closely mirrors the challenges and dynamics of an actual flight, ultimately producing highly skilled and proficient aviators for the Indonesian Air Force.







---

## TESTIMONIAL



**Bram U. Kusuma**



"At TNIAU Flying Training Wing, we've found an invaluable partner in BRUNNER. Their Control Loadings, utilized in the Grob G120TP and KAI KT-1B Simulators, have consistently delivered reliability and seamless integration.

What stood out was BRUNNER's exceptional communication, especially Mario's responsiveness to detailed technical questions, even before we became customers. Their after-sales support, led by Stefan, has been amazing. With simulators individually in use up to 500 hours per year, this level of commitment ensures our training remains at its peak.

BRUNNER's quality products and unparalleled support have made us very happy partners, contributing significantly to the success of our flight training program."





---

## KEY FEATURES

### Control Loading Precision:



The BRUNNER CLS-P linear motion device accurately replicates the travel and forces of the aircraft flight controls, providing students with realistic movements of the controls, like pitch, roll and yaw feedback / inputs.



### Easy & cost effective Upgrade:



The CLS devices from BRUNNER make it possible to improve existing simulators. Retrofitting is effortless, easy and cost effective which results in better and more efficient training. Integration and setup are simple, which allows the upgrade for training centers worldwide.



### Highly customisable:



BRUNNER's own CLS2SIM software can be used to make various adjustments to forces and travels within customisable flight model profiles. This means the control loading devices are suitable for every area of application and can be individually configured. Of course, our BRUNNER support team is also available in case your task is unmatched in complexity!





---

## ABOUT THE PRODUCT

As a top level element of our Control Loading System portfolio of leading drop-in devices, the CLS-P Linear Motion integrates perfectly into many new or existing FNPT I as well as in FNPT II MCC or even FTD Helicopter or Fixed-Wing cockpit environments.

The combination of integrated force sensor and high dynamic servo drive reacts with realistic movements of even finest inputs and offers an excellent artificial feel feeling for highest demands!

Our CLS-P Linear Motion is supporting single as well as dual pilot applications. It is designed for use with original or customer designed control mechanics (e.g. B737, C130, NH90) and provides high forces up to 2000N.



[DOWNLOAD FACTSHEET](#)



# Get a quote!

MARIO ACKERMANN

✉ [sales@brunner-innovation.swiss](mailto:sales@brunner-innovation.swiss)

☎ +41 44 953 10 10

